

Moapa Valley Farm

Introduction:

Moapa Valley High School offers agricultural vocation courses at the Clark County School District Agricultural Farm. The farm consists of an alfalfa barn, greenhouse, manager's trailer, pig pens, cattle pens, grain silo and a chicken coop. Surrounding the center of the facility are alfalfa and vegetable fields. The farm is characteristic of the historic agricultural practice in the Moapa Valley.

Objectives:

1. Enhance the Moapa Valley High School's existing 40 acre working farm to include a:
 - straw-bale classroom that can be used as an active learning space and workshop;
 - desert conservation demonstration garden to give design ideas to the local community.
2. To create a public space for community members to engage with the students in the setting of a working farm.



Aerial View of the Farm



Entrance Lane



Performing Site Analysis



Example of a Straw Bale Structure



Farm Manager and Students

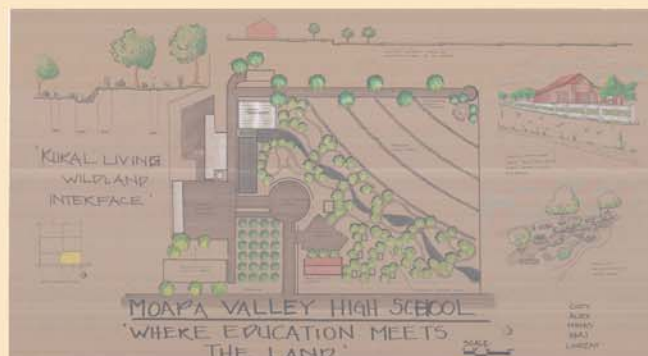


Charrette Participants

Design Solutions:



Farmers Market and Desert Demonstration Garden



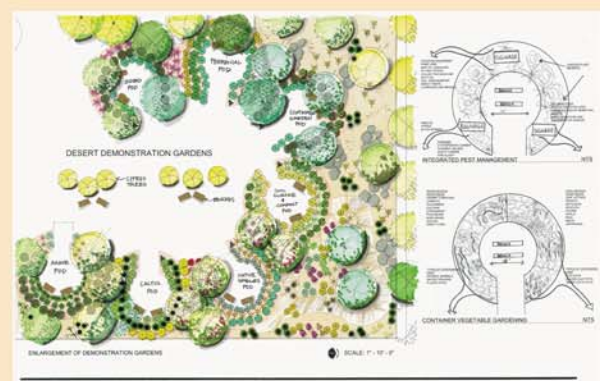
Barn Events Center and Desert Wash Garden



Desert Demonstration Garden and Wetlands



Demonstration Garden and Orchard



Demonstration Garden Details

Clark County School District

Clark County Department of Air Quality & Environmental Management

University of Nevada, Las Vegas Landscape Architecture and Planning Program

Conservation District of Southern Nevada

Straw Bale Design

The straw bale structure, funded through an EPA grant and private community donations, will be constructed by Moapa students and members of the school's Future Farmer's of America club. It will serve as a meeting room and demonstration center for outdoor lessons. Sheri Davis, the school's principal, believes that the straw building will promote integrated learning throughout all grade levels and subjects. Project design structure was donated by the Las Vegas based architecture firm Lucchessi Galati, at a value of \$10,000. The firm was so proud of the project that they submitted its design to the American Institute of Architects as an example of outstanding community cooperation to promote sustainable living spaces.

Desert Demonstration Gardens

A demonstration garden will surround the straw bale structure to teach students and visitors the conservation value of using native and desert adapted plants in their home landscapes. Students from University of Nevada, Las Vegas' Department of Landscape Architecture designed the gardens. Funds for planting the gardens is being provided by the Clark County Department of Air Quality and Environmental Management.

Community Involvement - "Friends of Pirates Cove"

To ensure long-term support for projects CDSN is working with the nonprofit organization Partners In Conservation and local residents to form a community support group for the school. Elise McAllister, Administrator of Partners In Conservation (PIC), feels that "private businesses can provide exceptional learning experiences and opportunities for students to make smart career choices doing something they really enjoy."



Conservation District of Southern Nevada

UNLV UNIVERSITY OF NEVADA LAS VEGAS